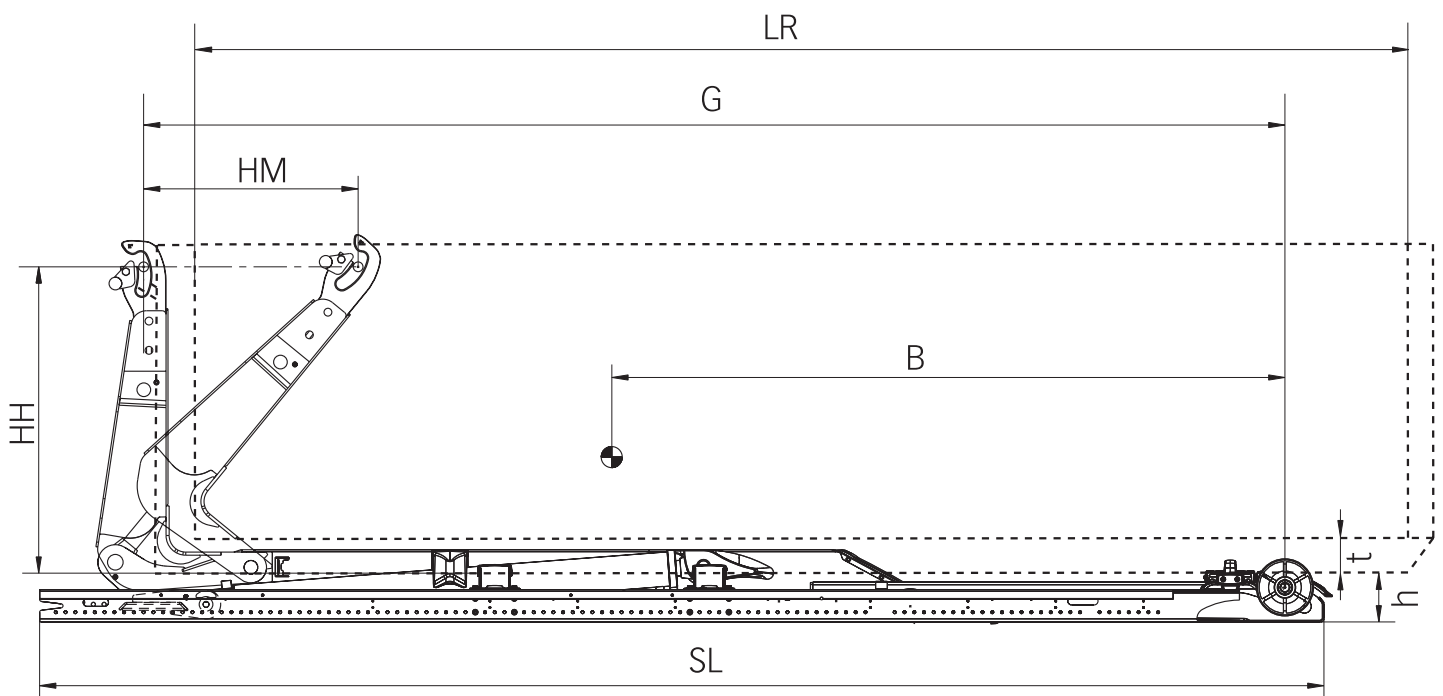


Hiab Multilift XP26T

Capacity 26 t



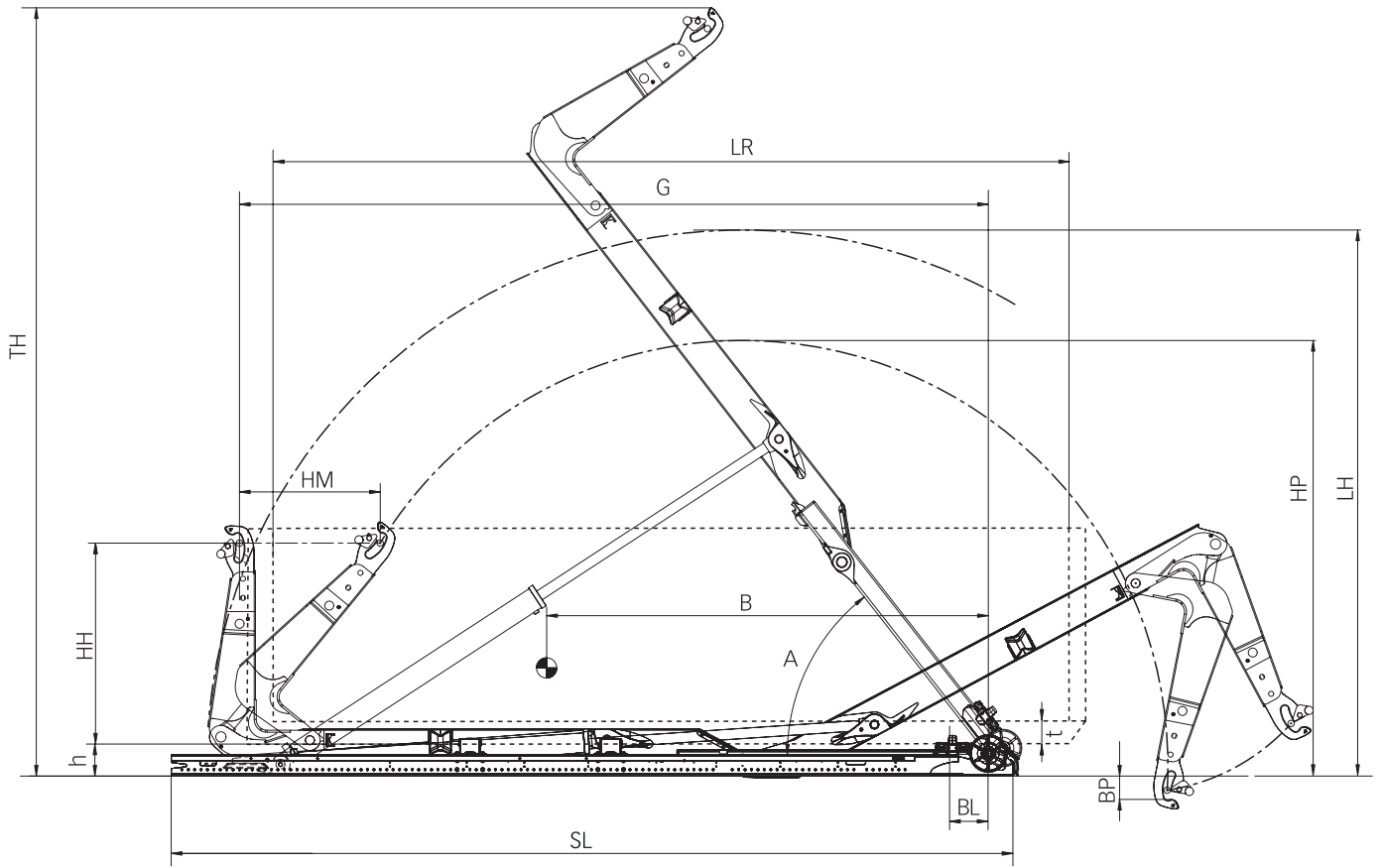
Hiab Multilift XP26T Technical data

Technical data	XP26T.55	XP26T.61
Capacity (t)	26	
G-length	55	61
System weight (kg)	2760	2900
A = Tipping angle (°)	49	49
B = Centre of gravity (mm)	3250	3550
G = Exact G-length (mm)	5480	6080
BP = Body pickup height offset (HH 1 570 mm) *	-231	-158
LH = Hooklift loading/unloading height (max) (mm)	3883	4269
LR = Body length (min – max) (m) internal	4.7 – 6.5	5.2 – 7.1
HM = Horizontal movement (mm)	1100	1100
HP = Hook bar position (max) (mm)	3105	3413
SL = Subframe length (mm)	6583	6733
TH = Hooklift tipping height (max) (mm)	5616	6056
BL = Body locking position (mm)	846	846
t = Min free tunnel height (body) (mm)	125	
h = Installation height (mm)	270	
BW = Body width (mm)	1070	
HH = Hook height (mm)	1570	
Max operating pressure (MPa)	30	
Recommended max oil flow (l/min)	120	

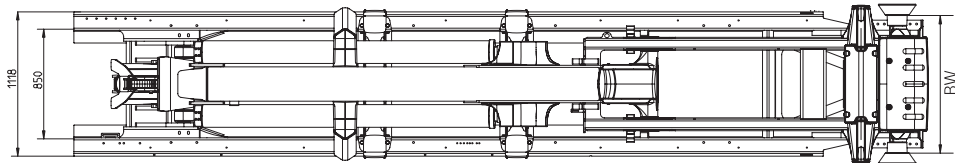
* Body pickup height offset is calculated from the final chassis height of the truck where the hooklift subframe is mounted.

Note! Any additional subframe added to the truck's chassis must also be calculated.

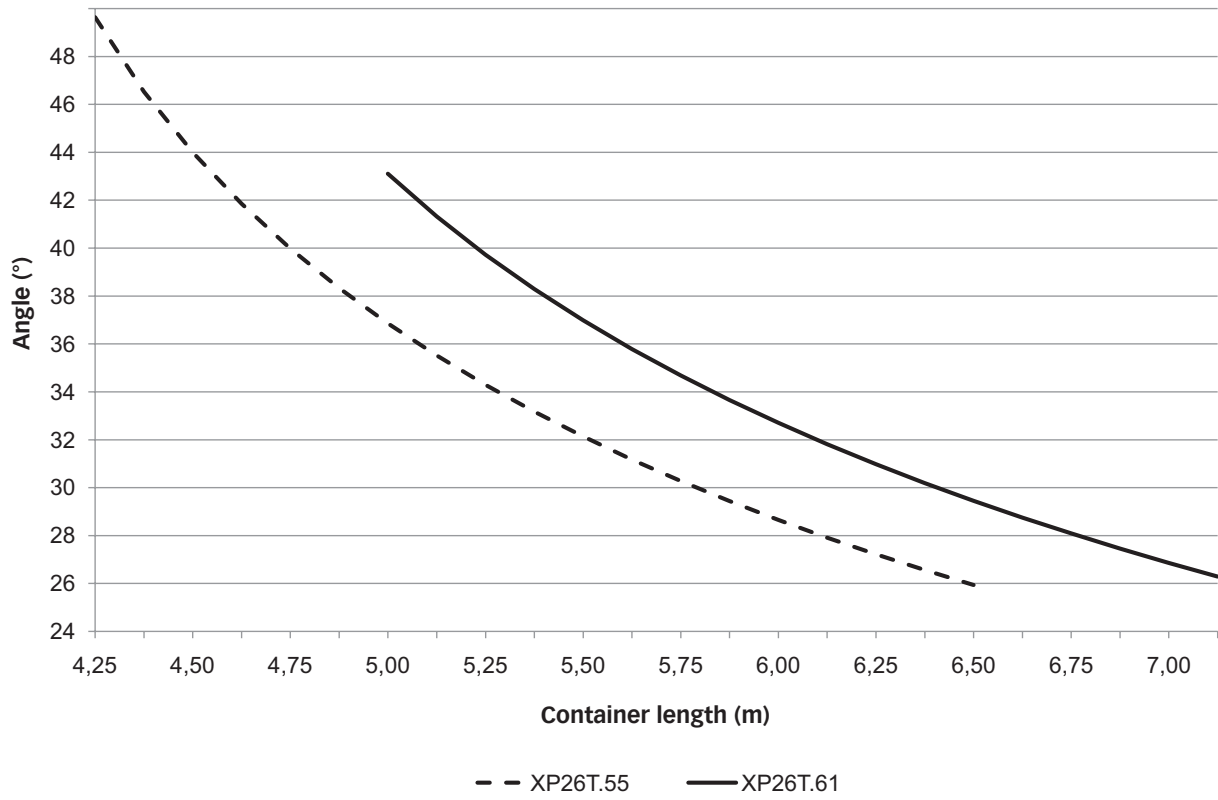
Hiab Multilift XP26T side view



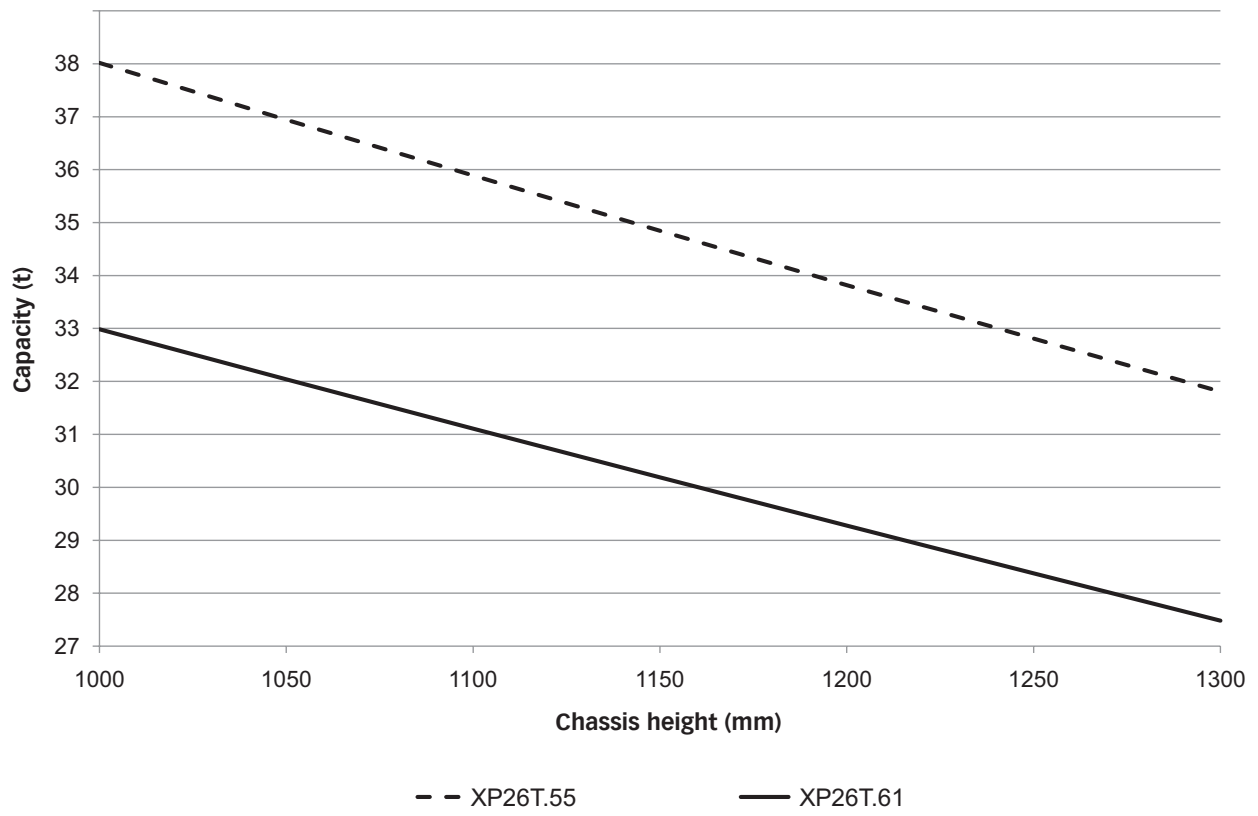
Hiab Multilift XP26T top view



Maximum angle during loading/unloading cycle (Chassis height 1150 mm)



Loading capacity diagram (Hook height 1570 mm)



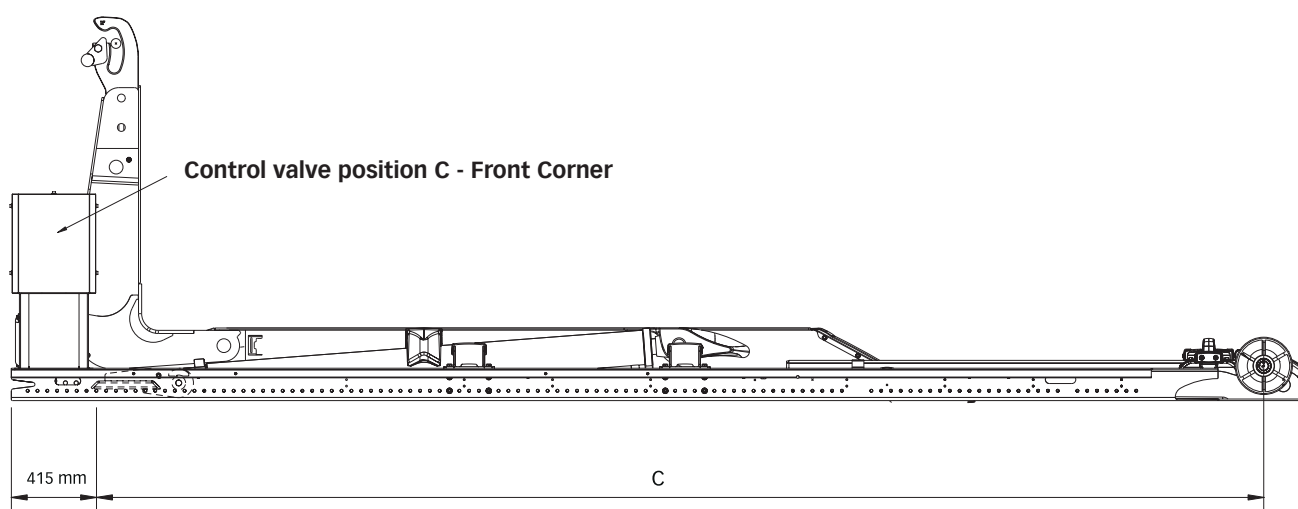
Cycle times

Cycle times in seconds (s) based on the recommended oil flow

Unloading	51 - 60
Loading	41 - 48
Tipping	45 - 54
Lowering	34 - 41
Complete cycle	171 - 203

Unloading	Open hydraulic body locks - Tilt hookarm backwards - Outstroke main cylinders
Loading	Instroke main cylinders - Tilt hookarm forwards - Close hydraulic body locks
Tipping	Outstroke main cylinders
Lowering	Instroke main cylinders
Complete cycle	Open hydraulic body locks - Tilt hookarm backwards - Outstroke main cylinders - Instroke main cylinders - Tilt hookarm forwards - Close hydraulic body locks - Outstroke main cylinders - Instroke main cylinders

Position of control valve



Position of control valve

Model	XP26T.55	XP26T.61
C – Front corner *	5450	6050

All dimensions are in millimetres

* Front corner dimension is the factory mounted position. This position can be adjusted during installation to meet individual requirements.

Cargotec improves the efficiency of cargo flows on land and at sea - wherever cargo is on the move. Cargotec's brands MacGregor, Kalmar and Hiab are recognised leaders in cargo and load handling solutions around the world. Cargotec's global network is positioned close to customers and offers extensive services that ensure the continuous, reliable and sustainable performance of equipment. www.cargotec.com

